

Submittal Data

PROJECT:	UNIT TAG:	QUANTITY:
REPRESENTATIVE: _____	TYPE OF SERVICE:	DATE: _____
ENGINEER:	SUBMITTED BY:	DATE:
CONTRACTOR:	APPROVED BY:	DATE:
	ORDER NO.:	DATE:

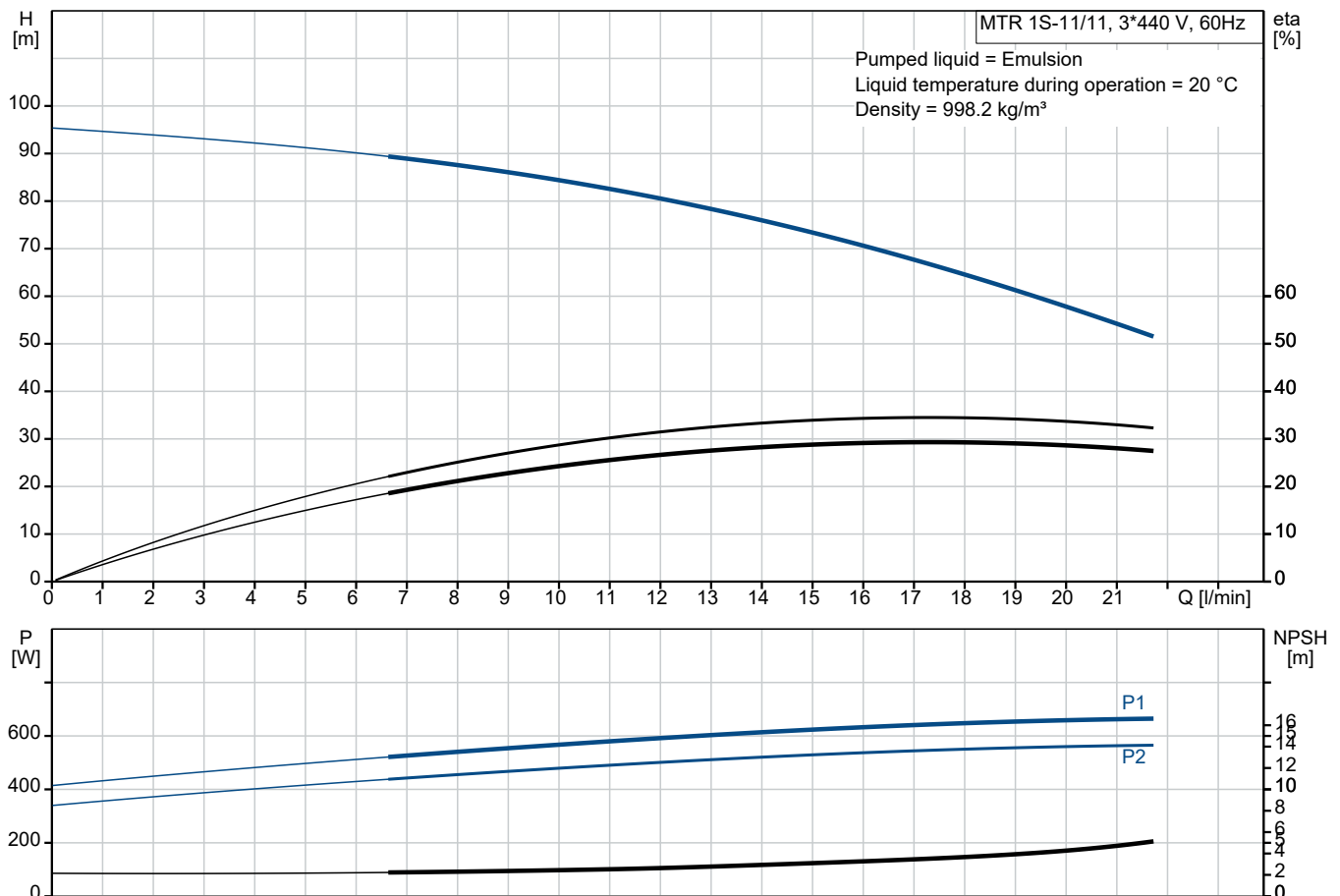


MTR 1S-11/11 A-W-A-HUUV

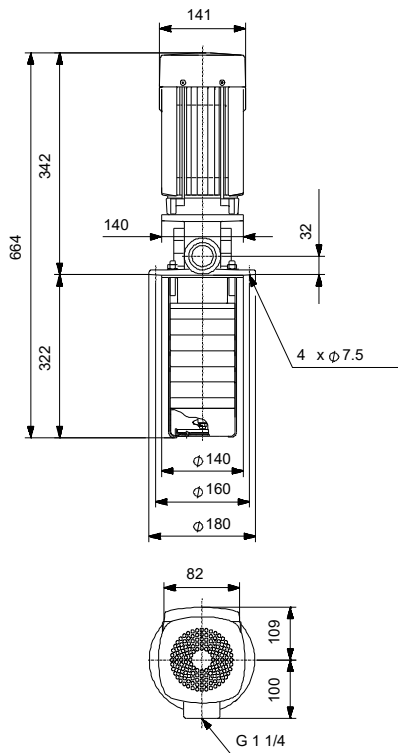
Vertical multistage centrifugal pump designed for tank top mounting and for pumping of cooling lubricants and cutting oils for machine tools, cooling applications, industrial liquid transfer and similar applications.

Note! Product picture may differ from actual product

Conditions of Service		Pump Data		Motor Data	
Liquid:	Emulsion	Max pressure at stated temp:	25 bar / 90 °C	Rated power - P2:	0.75 kW
Temperature:	20 °C	Liquid temperature range:	-10 .. 90 °C	Rated voltage:	220-255D/380-440Y V
Specific Gravity:	1.000	Maximum ambient temperature:	40 °C	Mains frequency:	60 Hz
		Shaft seal:	HUUV	Enclosure class:	55 Dust/Jetting
		Product number:	On request	Insulation class:	F
				Motor protection:	NONE
				Motor type:	80A
				Eta 1/1:	75.5-75.5 %



Submittal Data



Materials:

Impeller: Stainless steel

Impeller: AISI 304

Impeller: EN 1.4301

Material code: A

Qty. Description

1 MTR 1S-11/11 A-W-A-HUUV



Product No.: On request

Multistage, immersible, self-priming, centrifugal pump for vertical installation in tanks etc. The pump head and base are in cast iron – all other wetted parts are in stainless steel.

The pump has the following characteristics:

- Dimensions according to DIN 5440.
- Impellers, intermediate chambers and spline shaft are made of Stainless steel.
- Mechanical shaft seal according to EN 12756.
- Power transmission via sintered metal split coupling.

A cartridge shaft seal ensures high reliability, safe handling, and easy access and service. The pump is fitted with a 3-phase, fan-cooled asynchronous motor.

Immersion depth: 322 mm

Controls:

Frequency converter: None

Liquid:

Pumped liquid: Emulsion

Liquid temperature range: -10 .. 90 °C

Selected liquid temperature: 20 °C

Density: 998.2 kg/m³

Technical:

Pump speed on which pump data are based: 3474 rpm

Rated flow: 18.3 l/min

Rated head: 63.5 m

Chambers: 11

Drainage back to tank: N

Pump orientation: Vertical

Code for shaft seal: HUUV

Approvals: CE,EAC

Approvals for motor: EAC,RCMMorocco

Curve tolerance: ISO9906:2012 3B

Materials:

Pump head: Cast iron
EN 1561 EN-GJL-200
ASTM A48-25B

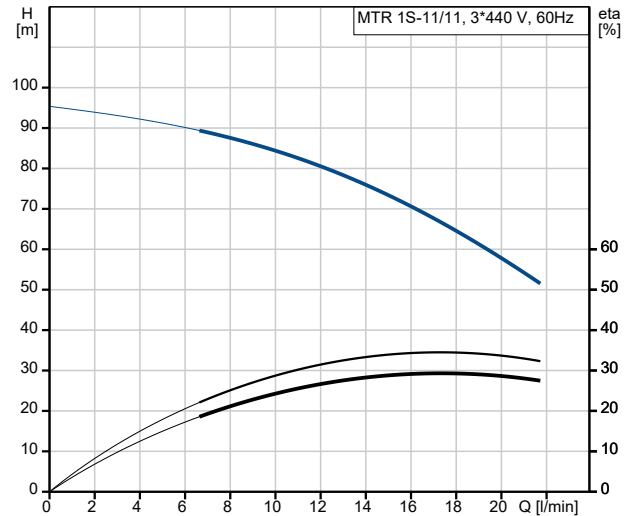
Impeller: Stainless steel
EN 1.4301
AISI 304

Installation:

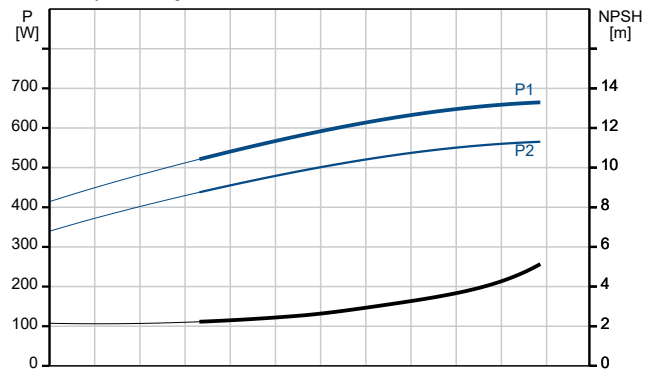
Maximum ambient temperature: 40 °C

Qty.	Description
1	<p>Maximum operating pressure: 25 bar Max pressure at stated temp: 25 bar / 90 °C Type of connection: G internal thread Size of outlet connection: 1 1/4 inch Immersion depth: 322 mm Flange size for motor: FT100</p> <p>Electrical data: Motor standard: IEC Motor type: 80A Rated power - P2: 0.75 kW Mains frequency: 60 Hz Suitable for 50/60 Hz: N Rated voltage: 3 x 220-255D/380-440Y V Rated current: 2,85-2,70/1,65-1,55 A Starting current: 600-740 % Cos phi - power factor: 0.86-0.78 Rated speed: 3400-3470 rpm IE efficiency: IE2 75,5% - IE2 75,5% IE Efficiency class: NEMA Energy / IE2 60Hz / NRC Motor efficiency at full load: 75.5-75.5 % Motor efficiency at 3/4 load: 85.5-85.0 % Motor efficiency at 1/2 load: 85.0-83.0 % Number of poles: 2 Enclosure class (IEC 34-5): 55 Dust/Jetting Insulation class (IEC 85): F Motor No: 85805104</p> <p>Others: Terminal box position: 6 Minimum efficiency index, MEI ≥: 0.67 Net weight: 14.9 kg Gross weight: 18.3 kg Shipping volume: 0.06 m³</p>

Description	Value
General information:	
Product name:	MTR 1S-11/11 A-W-A-HUUV
Product No:	On request
EAN number:	On request
Price:	
Technical:	
Pump speed on which pump data are based:	3474 rpm
Rated flow:	18.3 l/min
Rated head:	63.5 m
Chambers:	11
Impellers:	11
Number of reduced-diameter impellers:	0
Drainage back to tank:	N
Pump orientation:	Vertical
Code for shaft seal:	HUUV
Approvals:	CE, EAC
Approvals for motor:	EAC, RCMMorocco
Curve tolerance:	ISO9906:2012 3B
Pump version:	A
Model:	A
Materials:	
Pump head:	Cast iron
Pump head:	EN 1561 EN-GJL-200
Pump head:	ASTM A48-25B
Impeller:	Stainless steel
Impeller:	EN 1.4301
Impeller:	AISI 304
Material code:	A
Installation:	
Maximum ambient temperature:	40 °C
Maximum operating pressure:	25 bar
Max pressure at stated temp:	25 bar / 90 °C
Type of connection:	G internal thread
Size of outlet connection:	1 1/4 inch
Immersion depth:	322 mm
Flange size for motor:	FT100
Connect code:	W
Liquid:	
Pumped liquid:	Emulsion
Liquid temperature range:	-10 .. 90 °C
Selected liquid temperature:	20 °C
Density:	998.2 kg/m ³
Electrical data:	
Motor standard:	IEC
Motor type:	80A
Rated power - P2:	0.75 kW
Mains frequency:	60 Hz
Suitable for 50/60 Hz:	N
Rated voltage:	3 x 220-255D/380-440Y V
Rated current:	2,85-2,70/1,65-1,55 A
Starting current:	600-740 %
Cos phi - power factor:	0.86-0.78
Rated speed:	3400-3470 rpm
IE efficiency:	IE2 75,5% - IE2 75,5%
IE Efficiency class:	NEMA Energy / IE2 60Hz / NRC



Pumped liquid = Emulsion
 Liquid temperature during operation = 20 °C
 Density = 998.2 kg/m³





Company name:

Created by:

Phone:

Date:

30/01/2024

Description	Value
Motor efficiency at full load:	75.5-75.5 %
Motor efficiency at 3/4 load:	85.5-85.0 %
Motor efficiency at 1/2 load:	85.0-83.0 %
Number of poles:	2
Enclosure class (IEC 34-5):	55 Dust/Jetting
Insulation class (IEC 85):	F
Built-in motor protection:	NONE
Motor No:	85805104
Controls:	
Frequency converter:	None
Others:	
Terminal box position:	6
Minimum efficiency index, MEI ≥:	0.67
Net weight:	14.9 kg
Gross weight:	18.3 kg
Shipping volume:	0.06 m ³