

# Submittal Data

PROJECT: _____	UNIT TAG: _____	QUANTITY: _____
REPRESENTATIVE: _____	TYPE OF SERVICE: _____	DATE: _____
ENGINEER: _____	SUBMITTED BY: _____	DATE: _____
CONTRACTOR: _____	APPROVED BY: _____	DATE: _____
	ORDER NO.: _____	DATE: _____

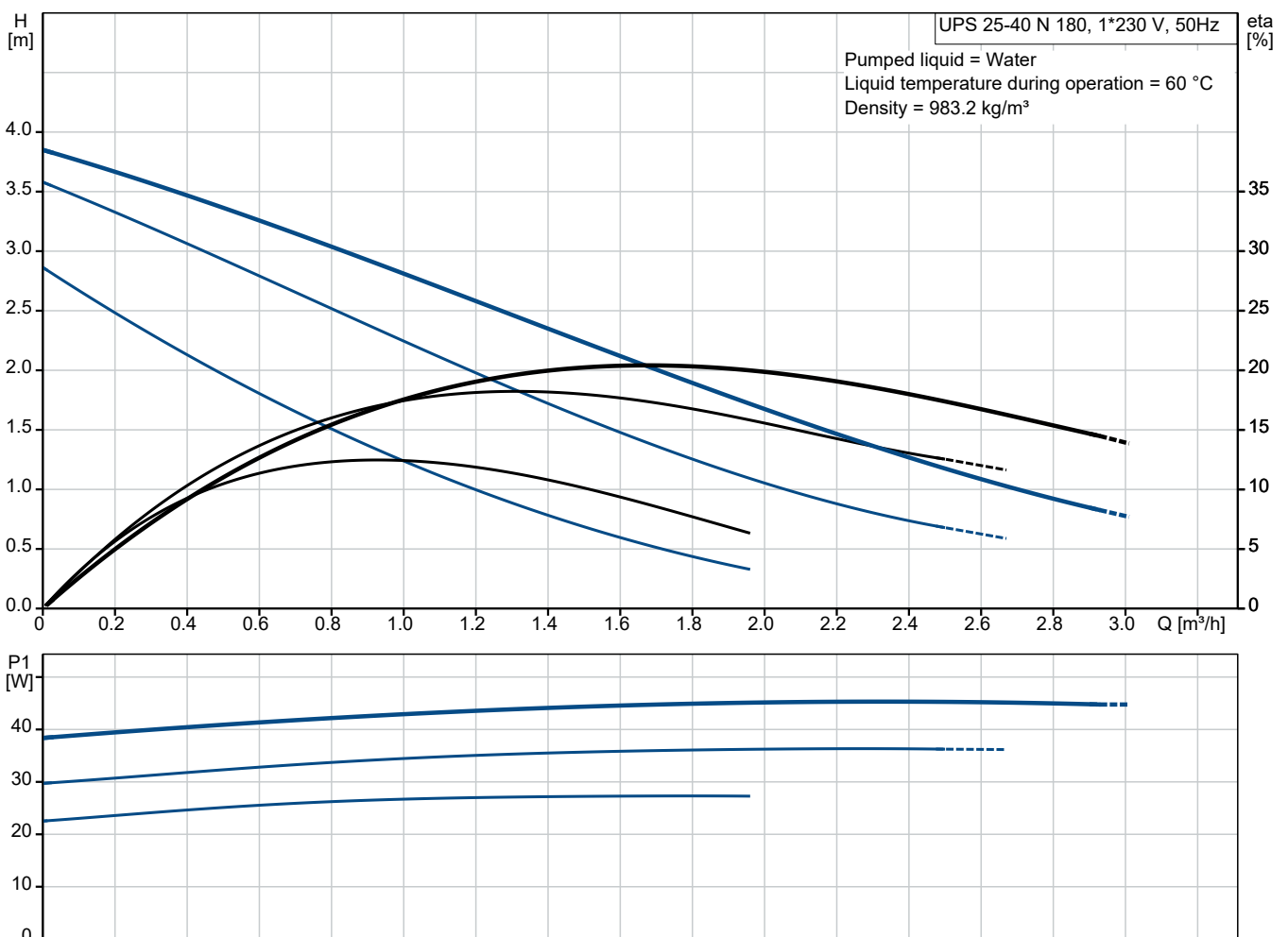


## UPS 25-40 N 180

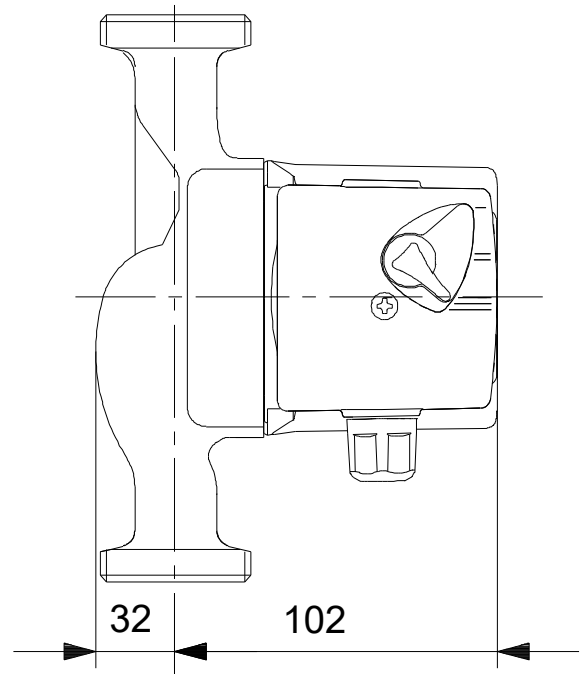
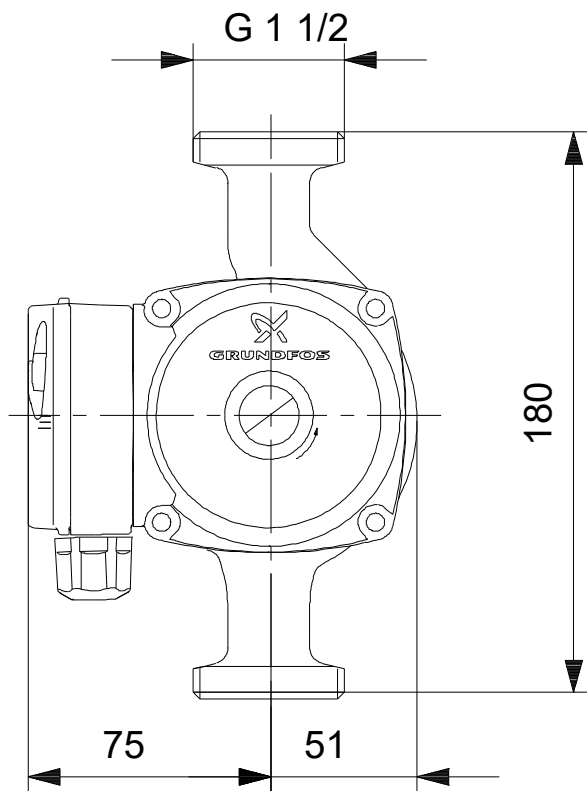
Grundfos UP, UPS N circulator pumps have a corrosion-free stainless-steel pump housing and are recommended for domestic hot-water recirculation and underfloor heating systems. UP, UPS N can be connected to an on/off time switch to limit pump operation to periods when hot water is usually required.

Note! Product picture may differ from actual product

Conditions of Service	Pump Data	Motor Data
Liquid: Water	Liquid temperature range: 2 .. 110 °C	Max. power input: 45 W
Temperature: 60 °C	Maximum ambient temperature: 40 °C	Mains frequency: 50 Hz
Specific Gravity: 0.985	Product number: On request	Enclosure class: IP44
		Thermal protection: Impedance protected



## Submittal Data



**Materials:**

Pump housing: Stainless steel

Impeller: Composite

## Qty. Description

1 UPS 25-40 N 180



Note! Product picture may differ from actual product

Product No.: On request

The pump is of the canned rotor type, i.e. pump and motor form an integral unit without shaft seal and with only two gaskets for sealing.

The bearings are lubricated by the pumped liquid.

The pump has 3-step speed selector.

The pump is characterized by:

- \* Ceramic shaft and radial bearings.
- \* Carbon axial bearing.
- \* Stainless steel rotor can and bearing plate.
- \* Corrosion-resistant impeller, Composite.
- \* Stainless steel pump housing.

The motor is a 1-phase motor.

No additional motor protection is required.

### Liquid:

Pumped liquid: Water  
Liquid temperature range: 2 .. 110 °C  
Selected liquid temperature: 60 °C  
Density: 983.2 kg/m<sup>3</sup>

### Technical:

Rated flow: 1.67 m<sup>3</sup>/h  
Rated head: 2.03 m  
TF class: 110  
Approvals: CE,VDE,EAC,WEEE

### Materials:

Pump housing: Stainless steel  
EN 1.4308  
Impeller: Composite  
PES+30% GF

### Installation:

Range of ambient temperature: 0 .. 40 °C  
Amb. max at 80 dgr C liquid: 40 °C  
Maximum operating pressure: 10 bar  
Type of connection: G  
Size of connection: 1 1/2 inch  
Pressure rating for connection: PN 10  
Port-to-port length: 180 mm

### Electrical data:

Power input in speed 1: 25 W  
Power input in speed 2: 35 W



Company name:

Created by:

Phone:

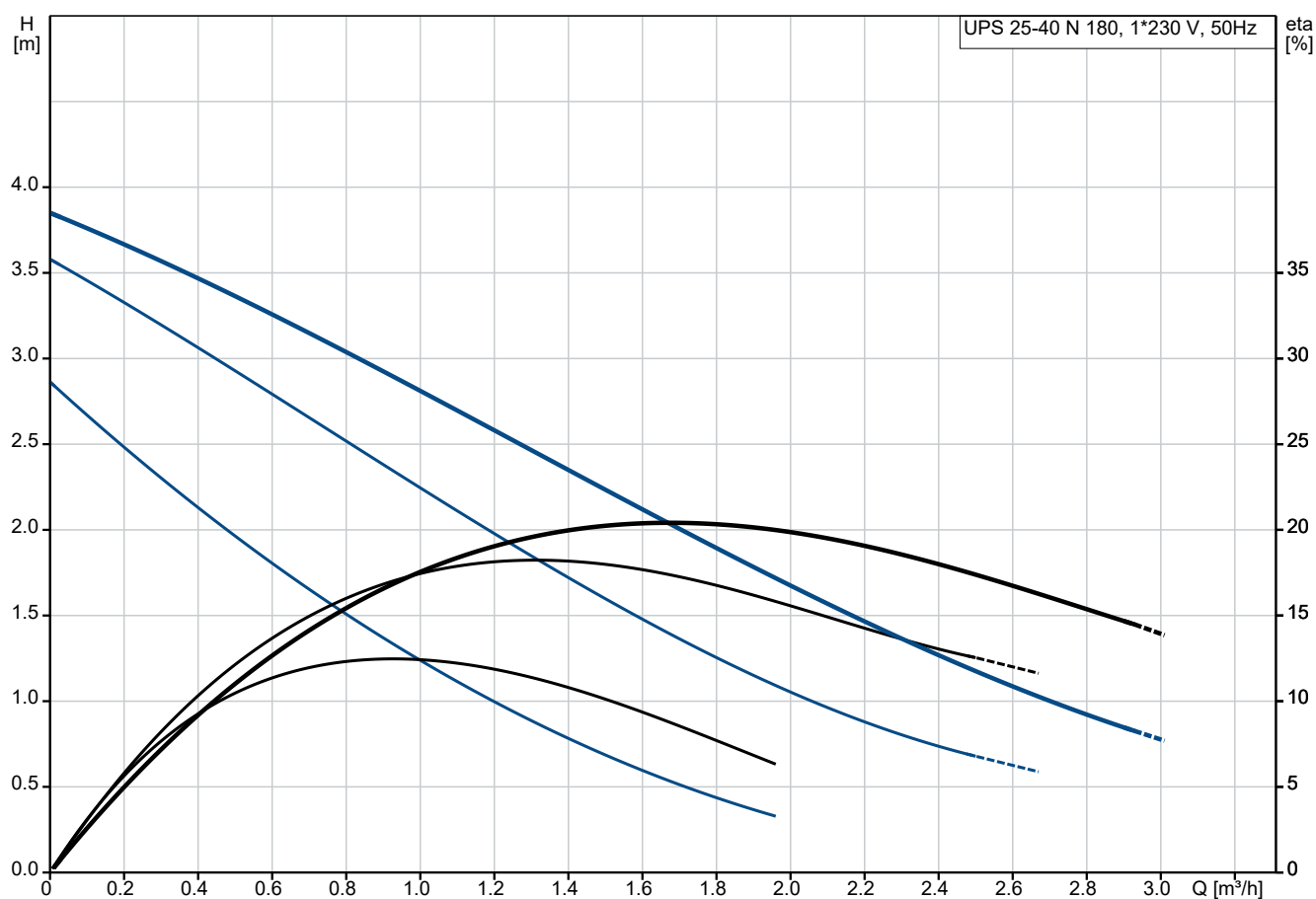
Date:

28/11/2023

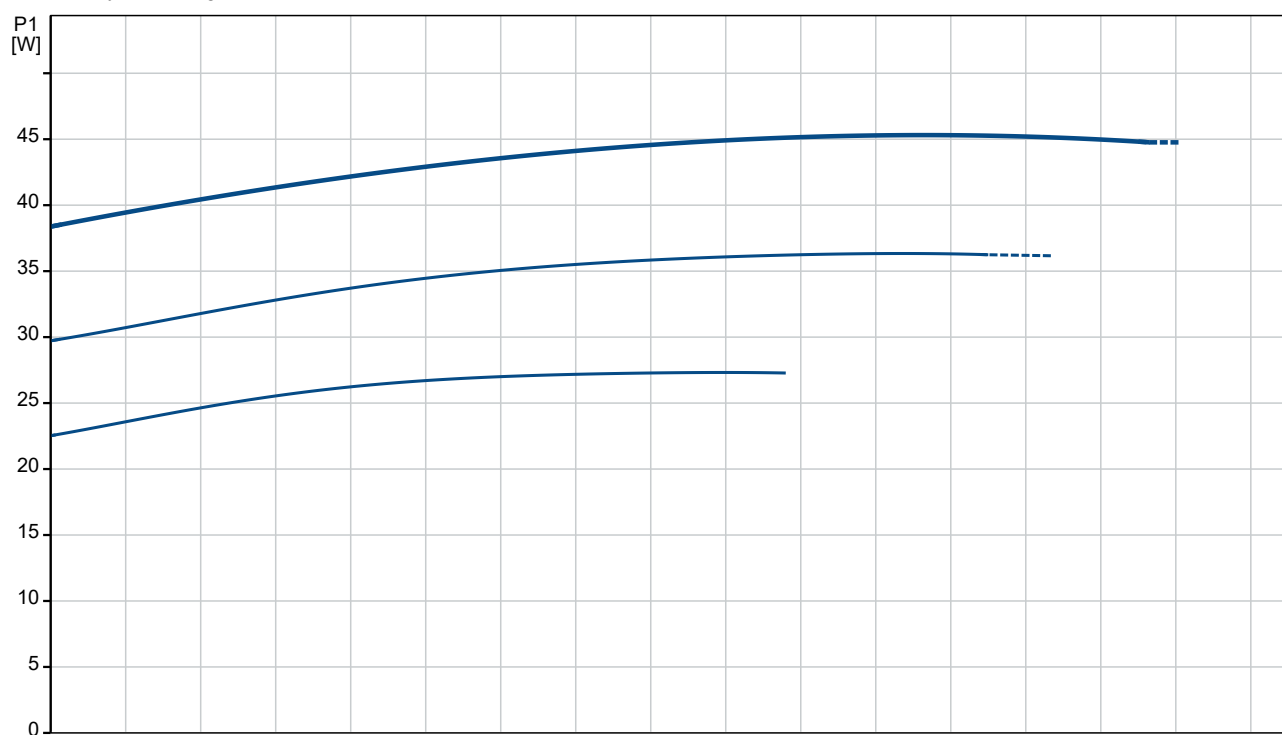
Qty.	Description
------	-------------

1	Max. power input: 45 W
	Mains frequency: 50 Hz
	Rated voltage: 1 x 230 V
	Current in speed 1: 0.12 A
	Current in speed 2: 0.16 A
	Current in speed 3: 0.2 A
	Capacitor size - run: 1.5 µF
	Enclosure class (IEC 34-5): IP44
	Insulation class (IEC 85): F
	Built-in motor protection: NONE
	Others:
	Terminal box position: 9H
	Net weight: 2.67 kg
	Gross weight: 2.8 kg
	Shipping volume: 0.004 m³
	Danish VVS No.: 380481041
	Swedish RSK No.: 5803098
	Country of origin: RS
	Custom tariff no.: 84137030

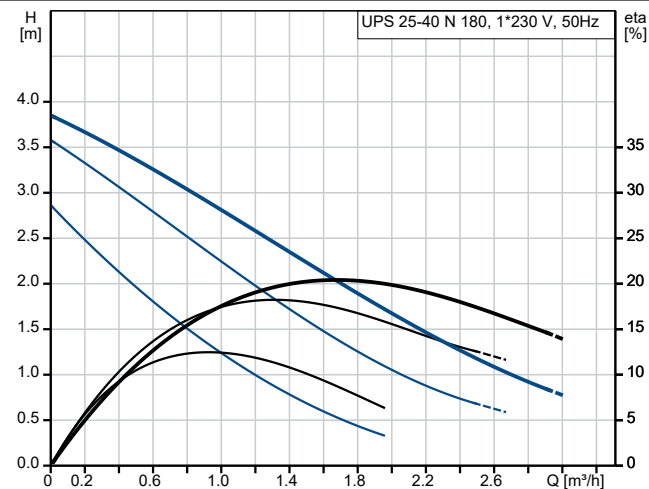
## On request UPS 25-40 N 180 50 Hz



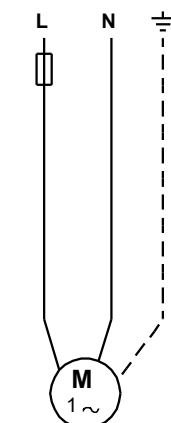
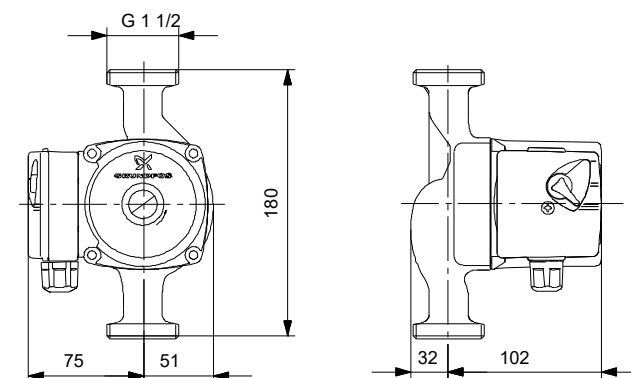
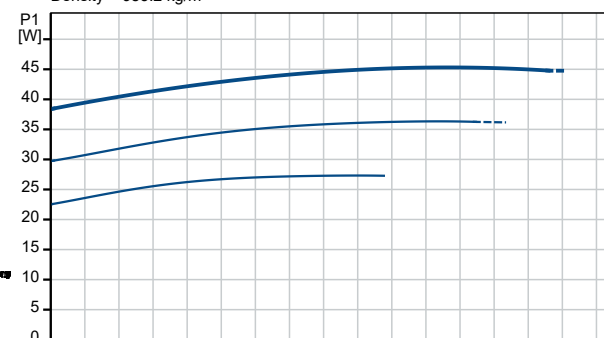
Pumped liquid = Water  
 Liquid temperature during operation = 60 °C  
 Density = 983.2 kg/m³



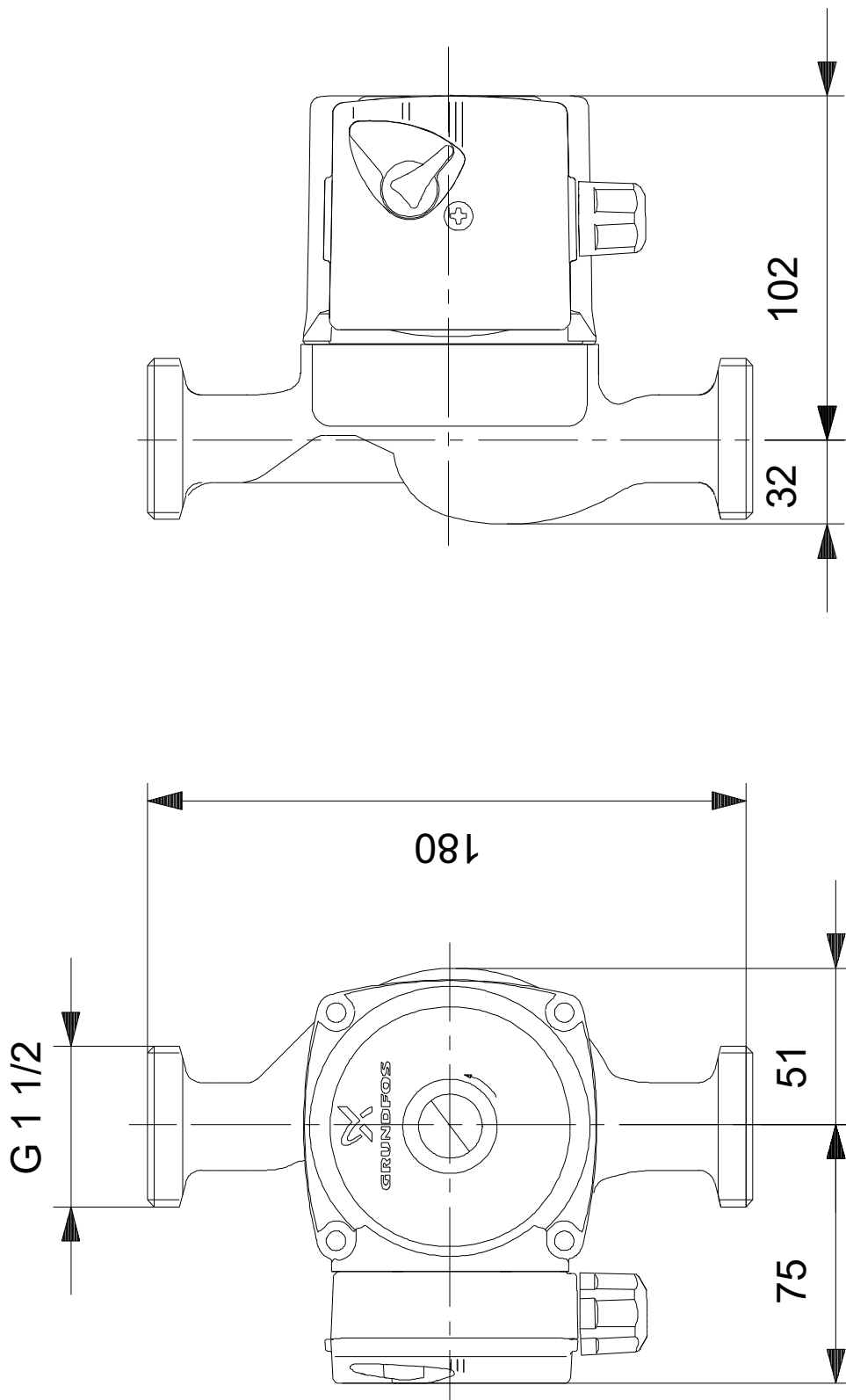
Description	Value
<b>General information:</b>	
Product name:	UPS 25-40 N 180
Product No:	On request
EAN number:	On request
<b>Technical:</b>	
Speed no:	3
Rated flow:	1.67 m³/h
Rated head:	2.03 m
Maximum head:	40 dm
TF class:	110
Approvals:	CE, VDE, EAC, WEEE
<b>Materials:</b>	
Pump housing:	Stainless steel
Pump housing:	EN 1.4308
Impeller:	Composite
Impeller:	PES+30% GF
<b>Installation:</b>	
Range of ambient temperature:	0 .. 40 °C
Amb. max at 80 dgr C liquid:	40 °C
Maximum operating pressure:	10 bar
Type of connection:	G
Size of connection:	1 1/2 inch
Pressure rating for connection:	PN 10
Port-to-port length:	180 mm
<b>Liquid:</b>	
Pumped liquid:	Water
Liquid temperature range:	2 .. 110 °C
Selected liquid temperature:	60 °C
Density:	983.2 kg/m³
<b>Electrical data:</b>	
Power input in speed 1:	25 W
Power input in speed 2:	35 W
Max. power input:	45 W
Mains frequency:	50 Hz
Rated voltage:	1 x 230 V
Current in speed 1:	0.12 A
Current in speed 2:	0.16 A
Current in speed 3:	0.2 A
Capacitor size - run:	1.5 µF
Enclosure class (IEC 34-5):	IP44
Insulation class (IEC 85):	F
Built-in motor protection:	NONE
Thermal protec:	Impedance protected
<b>Others:</b>	
Terminal box position:	9H
Net weight:	2.67 kg
Gross weight:	2.8 kg
Shipping volume:	0.004 m³
Danish VVS No.:	380481041
Swedish RSK No.:	5803098
Country of origin:	RS
Custom tariff no.:	84137030



Pumped liquid = Water  
Liquid temperature during operation = 60 °C  
Density = 983.2 kg/m³



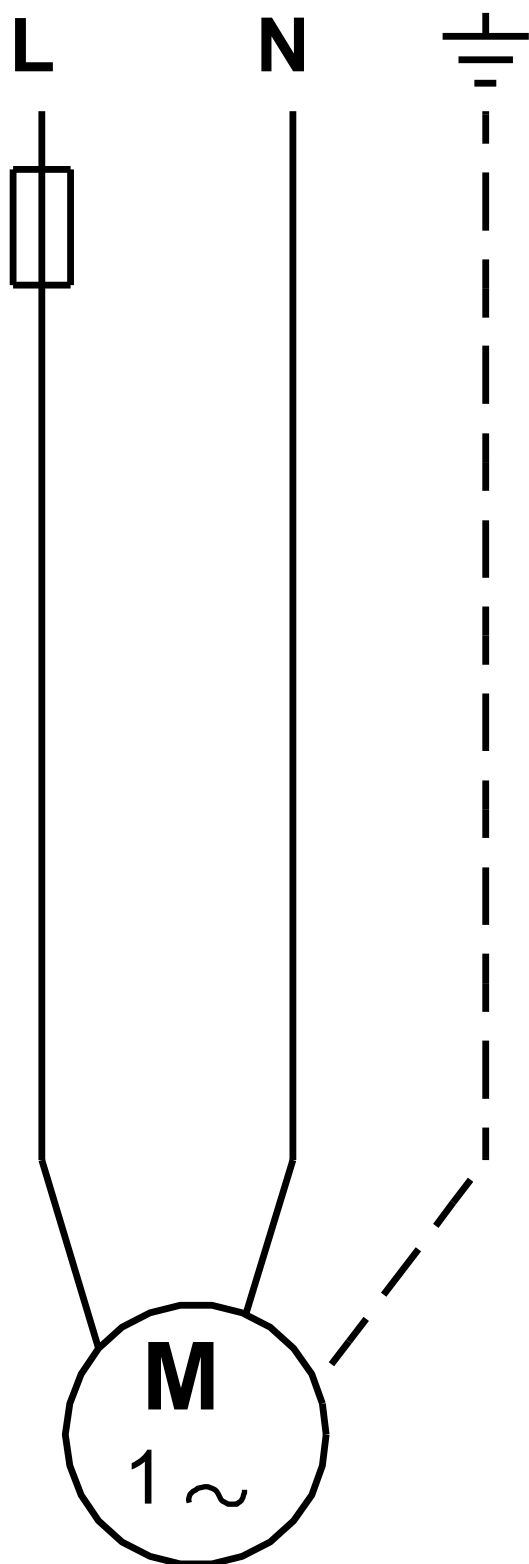
## On request UPS 25-40 N 180 50 Hz



Note! All units are in [mm] unless others are stated.

Disclaimer: This simplified dimensional drawing does not show all details.

**On request UPS 25-40 N 180 50 Hz**



Note! All units are in [mm] unless others are stated.



