

Qty.	Description
------	-------------

1	<p>MSS.11.1.2</p>  <p style="text-align: center;">Note! Product picture may differ from actual product</p> <p>Product No.: On request</p> <p>Supplied as complete unit ready for installation, the Multilift consist of a fully integrated collecting tank with pump and submersible motor, non-return valve, discharge adapter with flexible connection piece DN100 mounted on the collecting tank and a pre-wired Controller incl. a level sensor.</p> <p>The fully integrated collecting tank has all necessary ports for the connection of inlet pipe in heights of 180mm and 250mm, vent pipe DN50 and a manually operated diaphragm pump (accessory).</p> <p>The collecting tank contains 7 inlet sockets around it's shape. Back inlets 2x DN100 with one socket seal, socket for inlet at the sides 2 x DN100, top inlet DN100. 2x DN50 on top and side.</p> <p>Multilift corrosion free polyethylen collecting tanks are gas- and odour-proof as well as watertight , reduction of residual water and less sedimentation by chamfered bottom design.</p> <p>The pump with Vortex impeller and a maintenance free submersible motor, oil chamber with physiological harmless oil filling between two shaft seals. Motor protection via motor-protective circuit breaker inside pump head.</p> <p>LC220 controller with microprocessor is equipped with LED for all monitoring necessities. The pump and sensor are connected to the controller with 4m or 10m cable and tube length. The power supply cable is 1,5m with plug (incl. phase inverter for 3 phase motor)</p> <p>Contactless, piezo resistive pressure sensor pluggable inside the cabinet, monitored by controller. Blockage free pressure tube inside the tank without movable parts inside wastewater.</p> <p>The controller offer monitoring of pump operation.</p> <p>Controller functions:</p> <ul style="list-style-type: none"> • on/off control of one wastewater pump based on a continuous signal from a piezo-resistive sensor • dry running motor protection via run-time limitation with a following emergency operation • 24h automatic test runs during long periods of inactivity • operating indication: <ul style="list-style-type: none"> - pump status (running, fault) - time for service/maintenance once a year (selectable on/off by DIP switch) • fault indication: <ul style="list-style-type: none"> - phase-sequence fault and missing phase at 3ph. motors - high-water alarm - sensor fault - external alarm-switch (only alarm) - potential free contact for common alarm • automatic or manual alarm resetting (selectable by DIP switch) • easy selection of start level 180 or 250mm (selectable by DIP switch)
---	--



Note! Product picture may differ from actual product

Product No.: On request

Supplied as complete unit ready for installation, the Multilift consist of a fully integrated collecting tank with pump and submersible motor, non-return valve, discharge adapter with flexible connection piece DN100 mounted on the collecting tank and a pre-wired Controller incl. a level sensor.

The fully integrated collecting tank has all necessary ports for the connection of inlet pipe in heights of 180mm and 250mm, vent pipe DN50 and a manually operated diaphragm pump (accessory).

The collecting tank contains 7 inlet sockets around it's shape. Back inlets 2x DN100 with one socket seal, socket for inlet at the sides 2 x DN100, top inlet DN100. 2x DN50 on top and side.

Multilift corrosion free polyethylen collecting tanks are gas- and odour-proof as well as watertight , reduction of residual water and less sedimentation by chamfered bottom design.

The pump with Vortex impeller and a maintenance free submersible motor, oil chamber with physiological harmless oil filling between two shaft seals. Motor protection via motor-protective circuit breaker inside pump head.

LC220 controller with microprocessor is equipped with LED for all monitoring necessities. The pump and sensor are connected to the controller with 4m or 10m cable and tube length. The power supply cable is 1,5m with plug (incl. phase inverter for 3 phase motor)

Contactless, piezo resistive pressure sensor pluggable inside the cabinet, monitored by controller. Blockage free pressure tube inside the tank without movable parts inside wastewater.

The controller offer monitoring of pump operation.

Controller functions:

- on/off control of one wastewater pump based on a continuous signal from a piezo-resistive sensor
- dry running motor protection via run-time limitation with a following emergency operation
- 24h automatic test runs during long periods of inactivity
- operating indication:
 - pump status (running, fault)
 - time for service/maintenance once a year
 (selectable on/off by DIP switch)
- fault indication:
 - phase-sequence fault and missing phase at 3ph. motors
 - high-water alarm
 - sensor fault
 - external alarm-switch (only alarm)
 - potential free contact for common alarm
- automatic or manual alarm resetting
- (selectable by DIP switch)
- easy selection of start level 180 or 250mm
- (selectable by DIP switch)

Qty.	Description
1	<p>One additional input to connect a separate level switch to be used for flood detection outside the Multilift (external alarm).</p> <p>Lifting stations are often installed in a sump inside the basement at the lowest point in the building. In case of e.g. groundwater inflow or water pipe burst, an alarm will be indicated by the controller.</p> <p>The Multilift range is designed due to the standard EN12050-1, approved and monitored by external institute LGA. Further approvals are VDE, GHOST, CB, EMV</p> <p>Technical:</p> <p>Pump speed on which pump data are based: 2760 rpm</p> <p>Rated flow: 5.5 l/s</p> <p>Maximum flow: 8.61 l/s</p> <p>Rated head: 4.1 m</p> <p>Type of impeller: VORTEX</p> <p>Max. Particle: 40 mm</p> <p>Approvals: CE,EAC,CN ROHS,MORO,UKCA,SEPRO</p> <p>CE approved (Yes/No): Y</p> <p>EN number for LGA approval: Y</p> <p>Non-return valve type: Flap valve</p> <p>Materials:</p> <p>Pump housing: Composite</p> <p>Tank: PLASTIC LDPE</p> <p>Gasket: NBR</p> <p>Installation:</p> <p>Range of ambient temperature: 0 .. 40 °C</p> <p>Type of outlet connection: DIN</p> <p>Size of outlet connection: DN 80</p> <p>Pressure rating for connection: PN 6</p> <p>Liquid:</p> <p>Liquid temperature range: 0 .. 40 °C</p> <p>Selected liquid temperature: 20 °C</p> <p>Density: 998.2 kg/m³</p> <p>Electrical data:</p> <p>Power input P1: 1.7 kW</p> <p>Rated power - P2: 1.1 kW</p> <p>Mains frequency: 50 Hz</p> <p>Rated voltage: 1 x 230 V</p> <p>Voltage tolerance: +10/-6 %</p> <p>Max starts per hour: 60</p> <p>Rated current: 8 A</p> <p>Cos phi - power factor: 0.95</p> <p>Capacitor size - run: 20 µF</p> <p>Number of poles: 2</p> <p>Start. method: DOL</p> <p>Enclosure class (IEC 34-5): IP68</p> <p>Insulation class (IEC 85): F</p> <p>Built-in motor protection: KLIXON</p> <p>Length of cable: 1.5 m</p> <p>Power plug: SCHUKO</p> <p>Controls:</p>



Company name:

Created by:

Phone:

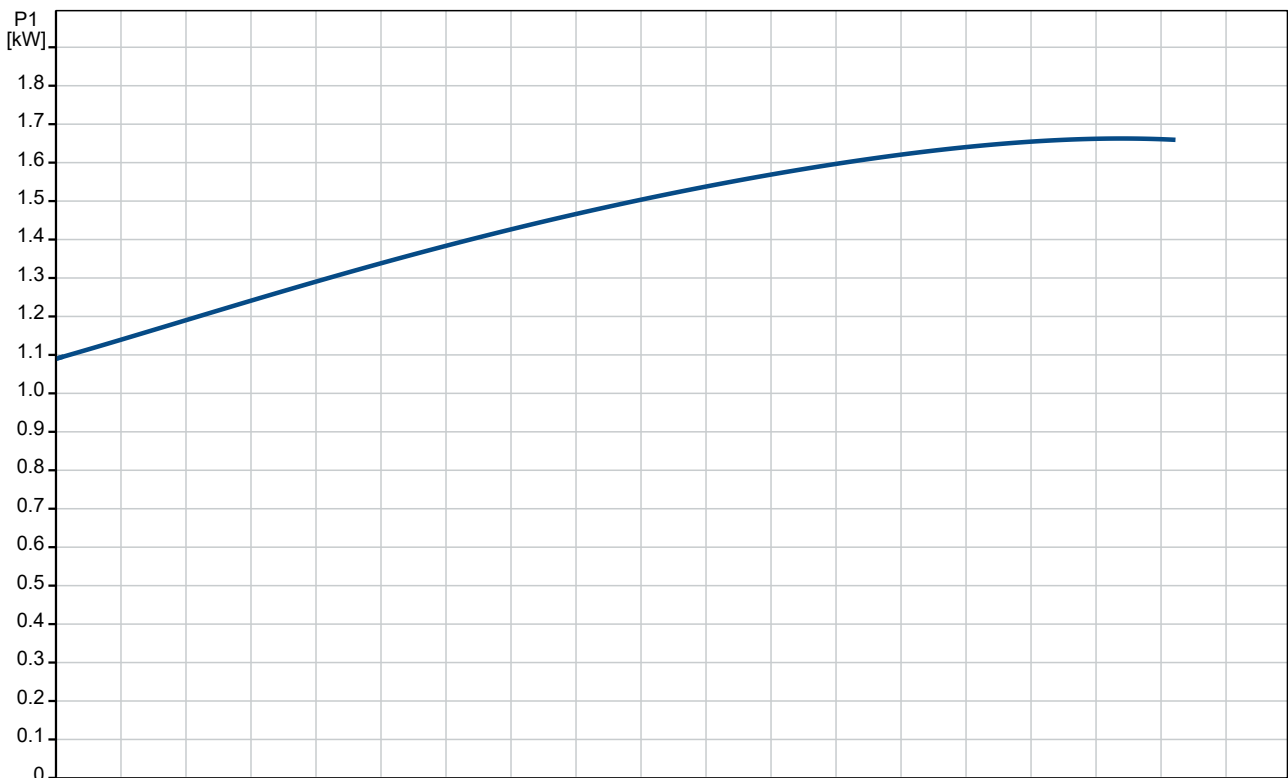
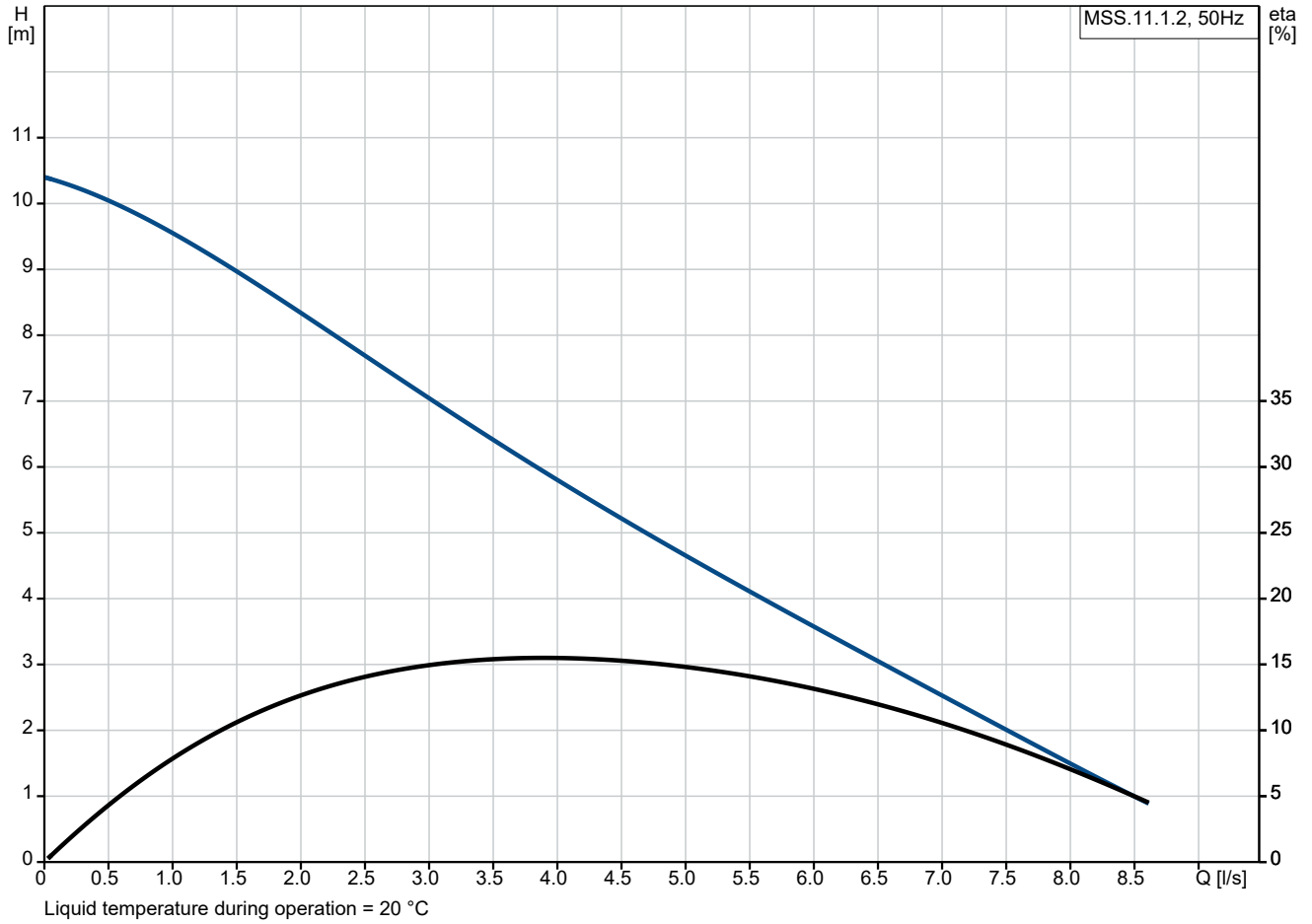
Date:

20/10/2024

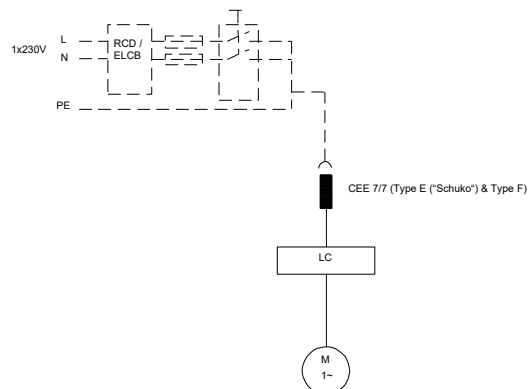
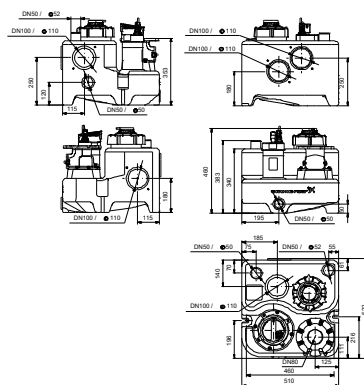
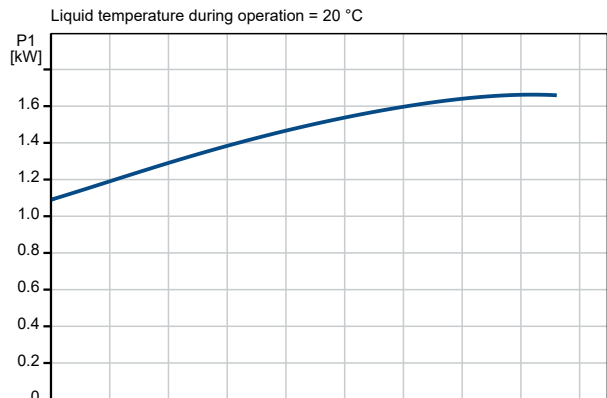
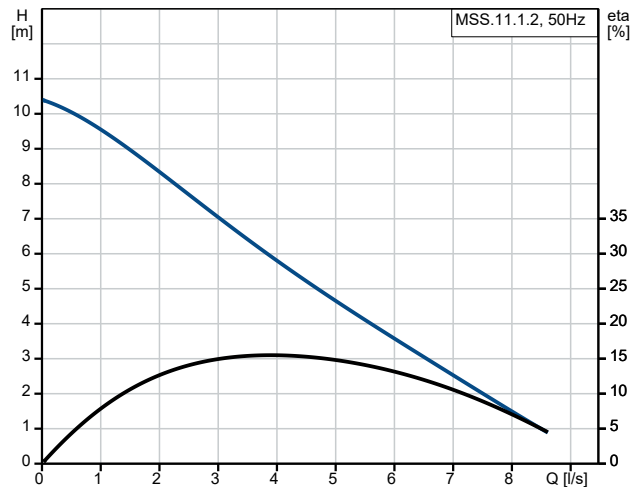
Qty. Description

1	Type of control box: LC220
	Tank:
	Total volume of tank(s): 44 l
	Total effective volume of collecting tank at 180 mm inlet: 20 l
	Total effective volume of collecting tank at 250 mm inlet: 28 l
	Others:
	Net weight: 27.4 kg
	Gross weight: 38.1 kg
	Danish VVS No.: 154030011
	Norwegian NRF no.: 9045302
	Country of origin: DE
	Custom tariff no.: 84137021
	Environmental approvals: WEEE

On request MSS.11.1.2 50 Hz



Description	Value
General information:	
Product name:	MSS.11.1.2
Product No:	On request
EAN number:	On request
Price:	€ 4844.54
Technical:	
Pump speed on which pump data are based:	2760 rpm
Rated flow:	5.5 l/s
Maximum flow:	8.61 l/s
Rated head:	4.1 m
Maximum head:	10.4 m
Type of impeller:	VORTEX
Max. Particle:	40 mm
Approvals:	CE,EAC,CN ROHS,MORO,UKCA,SEPRO
CE approved (Yes/No):	Y
EN number for LGA approval:	Y
Non-return valve type:	Flap valve
Materials:	
Pump housing:	Composite
Tank:	PLASTIC
Tank:	LDPE
Gasket:	NBR
Installation:	
Range of ambient temperature:	0 .. 40 °C
Type of outlet connection:	DIN
Size of outlet connection:	DN 80
Pressure rating for connection:	PN 6
Liquid:	
Liquid temperature range:	0 .. 40 °C
Selected liquid temperature:	20 °C
Density:	998.2 kg/m ³
Electrical data:	
Power input P1:	1.7 kW
Rated power - P2:	1.1 kW
Mains frequency:	50 Hz
Rated voltage:	1 x 230 V
Voltage tolerance:	+10/-6 %
Max starts per hour:	60
Rated current:	8 A
Cos phi - power factor:	0.95
Capacitor size - run:	20 µF
Number of poles:	2
Start. method:	DOL
Enclosure class (IEC 34-5):	IP68
Insulation class (IEC 85):	F
Built-in motor protection:	KLIXON
Length of cable:	1.5 m
Motor cable:	4 m
Cable type:	H07RN-F
Power plug:	SCHUKO
Mains cable:	H05VV-F
Controls:	
Type of control box:	LC220
Operation mode:	S3-10%,1 MIN.
Tank:	
Total volume of tank(s):	44 l





Company name:

Created by:

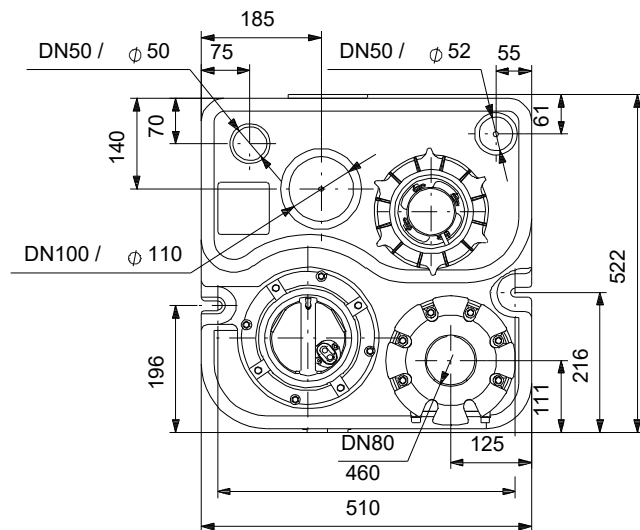
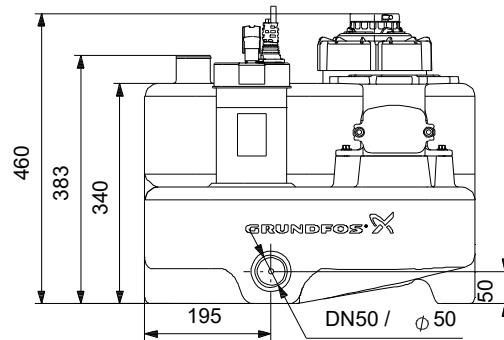
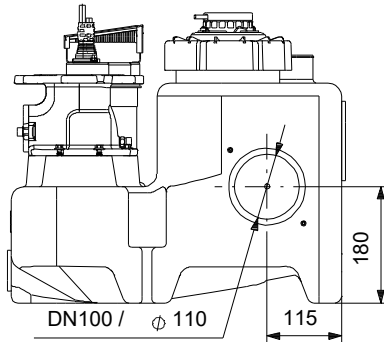
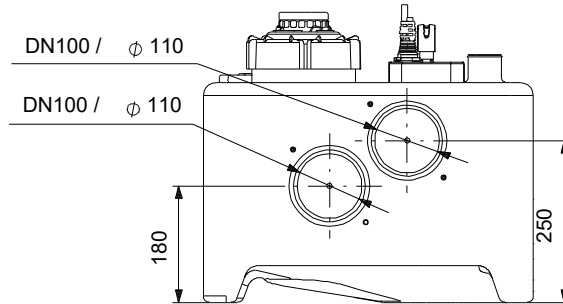
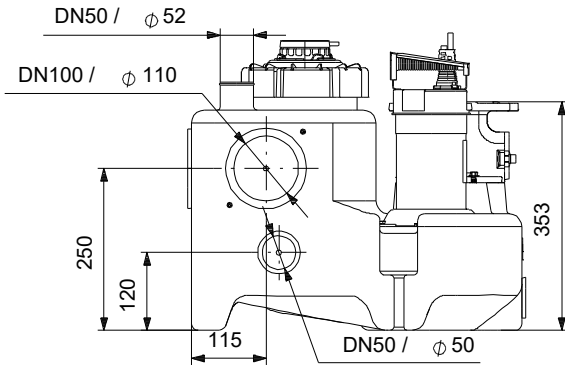
Phone:

Date:

20/10/2024

Description	Value
Total effective volume of collecting tank at 180 mm inlet:	20 l
Total effective volume of collecting tank at 250 mm inlet:	28 l
Others:	
Net weight:	27.4 kg
Gross weight:	38.1 kg
Danish VVS No.:	154030011
Norwegian NRF no.:	9045302
Country of origin:	DE
Custom tariff no.:	84137021
Environmental approvals:	WEEE

On request MSS.11.1.2 50 Hz



Note! All units are in [mm] unless others are stated.
Disclaimer: This simplified dimensional drawing does not show all details.