

Submittal Data

PROJECT:	UNIT TAG:	QUANTITY:
REPRESENTATIVE: _____	TYPE OF SERVICE:	DATE: _____
ENGINEER:	SUBMITTED BY:	DATE:
CONTRACTOR:	APPROVED BY:	DATE:
	ORDER NO.:	DATE:

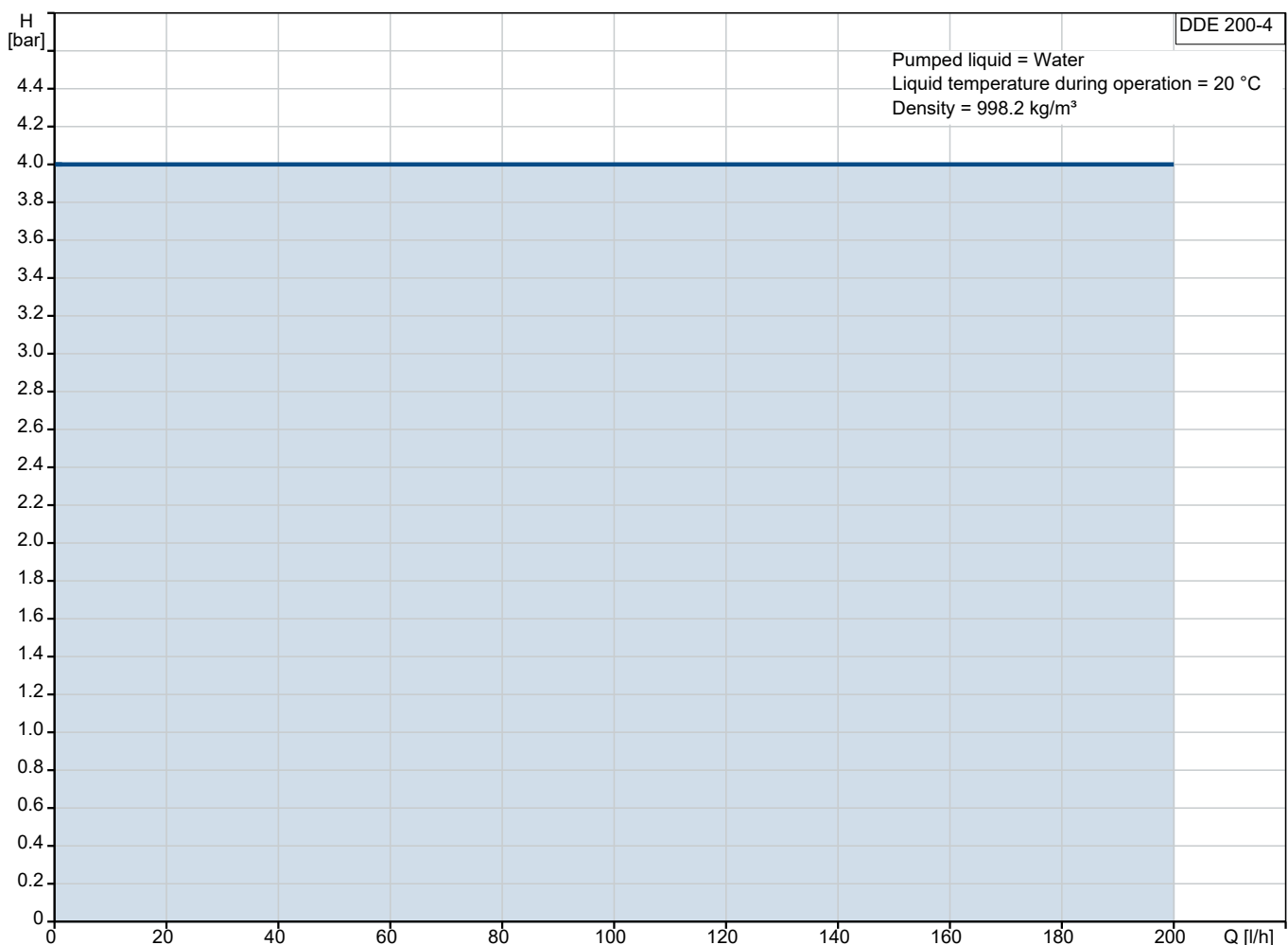
DDE 200-4



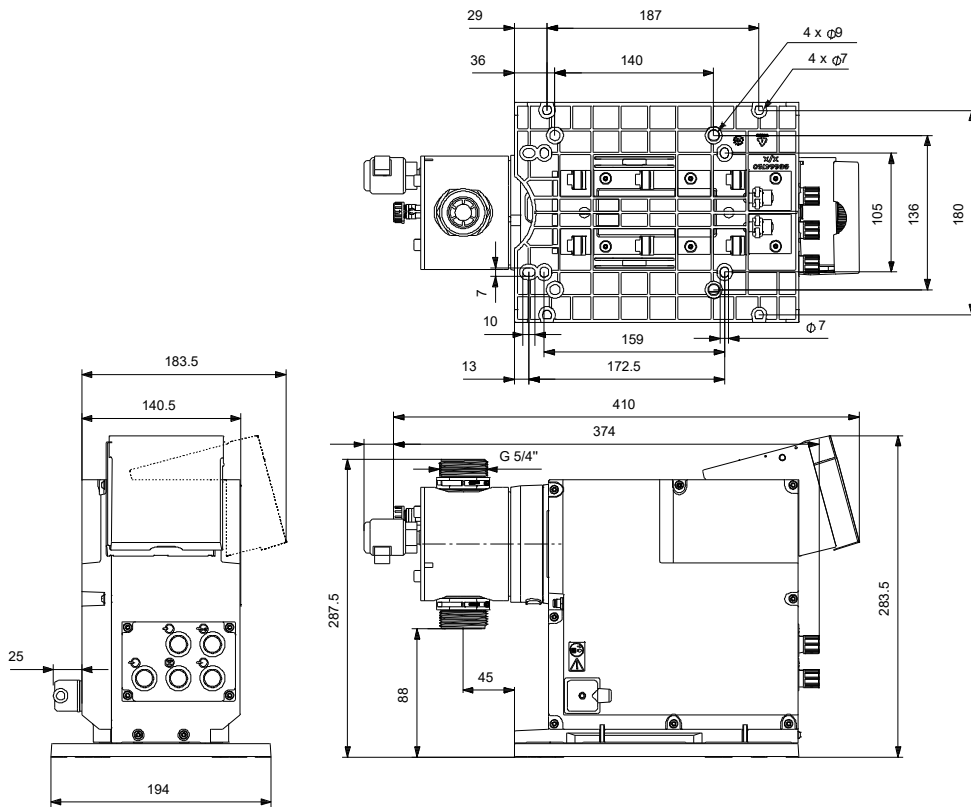
SMART Digital diaphragm dosing pump with internal stepper motor drive. Economic Digital Dosing even for basic dosing applications (Digital Dosing Essential).

Note! Product picture may differ from actual product

Conditions of Service		Pump Data		Motor Data	
Liquid:	Water	Maximum operating pressure:	4 bar	Rated voltage:	100-240 V
Temperature:	20 °C	Liquid temperature range:	0 .. 40 °C	Mains frequency:	50 / 60 Hz
Specific Gravity:	1.000	Maximum ambient temperature:	45 °C	Enclosure class:	IP65 / TYPE 4X
		Product number:	On request		



Submittal Data



Materials:

Dosing head: PVC (Polyvinyl chloride)

Valve ball: Ceramic

Gasket: PTFE

Qty. Description

1 **DDE 200-4**



Note! Product picture may differ from actual product

Product No.: On request
DDE 200-4 AR-PVC/T/C-F-31U3U3F

The SMART Digital DDE is a compact positive displacement, diaphragm dosing pump with variable-speed drive (PMS motor) and intelligent control electronics with minimum energy consumption.

The SMART Digital Dosing series operates at full stroke length to ensure optimum accuracy, priming and suction, even for degassing liquids.

The duration of each discharge stroke varies according to the capacity set, resulting in optimum smooth and continuous discharge flow.

The mounting plate allows quick installation and service. The control cube can be turned easily into front, left or right position. The dosing flow can be adjusted by means of an adjustment knob on a logarithmical scale from 0.1-100%. The control elements are protected by a transparent cover.

The dosing head is composed of:

- Long lifetime and universal, chemically resistant full double PTFE diaphragm.
- Ball valves for highest dosing accuracy.
- Deaeration valve for easy startup.

Operating modes:

- Manual dosing from 0.1 to 100%.
- Pulse control (divisor function included).
- Analog 4-20 mA control (scalable maximum flow)

Other features:

- 100 % key (maximum capacity), e.g. for deaeration.
- Operation mode switch key between manual, pulse and analog.
- Status LEDs for pulse, analog and manual.

Signal- Inputs/outputs:

- Input for pulse, external stop, analog 4-20 mA.
- Input for empty tank signal.
- Two potential-free output relays for maximum 30 V AC/DC (configurable, e.g. alarm, low level, full stroke signal and pulse)

Controls:

Control variant:	AR
Level control:	YES
Analog input:	0/4-20 MA
Pulse control:	YES
Ext. Stop input:	Yes
Output relays:	Yes

Liquid:

Pumped liquid:	Water
Liquid temperature range:	0 .. 40 °C
Selected liquid temperature:	20 °C

Qty. Description

1	<p>Density: 998.2 kg/m³</p> <p>Technical:</p> <p>Type key: DDE 200-4 AR-PVC/T/C-F-31U3U3F</p> <p>Max. Flow: 200 l/h</p> <p>Min flow: 250 ml/h</p> <p>Turn-down ratio: 1:800</p> <p>Approvals: CE,CSA-US,NSF61,EAC,RCM</p> <p>Valve type: Standard</p> <p>Maximum viscosity at 100 %: 100 mPas</p> <p>Maximum viscosity in slow mode 50 %: N/A mPas</p> <p>Maximum viscosity in slow mode 25 %: N/A mPas</p> <p>Accuracy of repeatability: 5 %</p> <p>Materials:</p> <p>Dosing head: PVC (Polyvinyl chloride)</p> <p>Valve ball: Ceramic</p> <p>Gasket: PTFE</p> <p>Installation:</p> <p>Range of ambient temperature: 0 .. 45 °C</p> <p>Maximum operating pressure: 4 bar</p> <p>Installation set: NO</p> <p>Installation type: No installation set</p> <p>Pump inlet: Conn.pack U3 (hose ID.19mm &..</p> <p>Pump outlet: Conn.pack U3 (hose ID.19mm &..</p> <p>Max. Suction lift during operation: 3 m</p> <p>Max. Suction lift during priming: 1.5 m</p> <p>Electrical data:</p> <p>Maximum power input - P1: 62 W</p> <p>Mains frequency: 50 / 60 Hz</p> <p>Rated voltage: 1 x 100-240 V</p> <p>Enclosure class (IEC 34-5): IP65 / TYPE 4X</p> <p>Length of cable: 1.5 m</p> <p>Type of cable plug: EU</p> <p>Inrush current: 70A at 240V (35A/100V) for 2ms</p> <p>Others:</p> <p>Net weight: 7 kg</p> <p>Gross weight: 7 kg</p> <p>Color: RED</p> <p>Country of origin: FR</p> <p>Custom tariff no.: 84135040</p>
---	---



Company name:

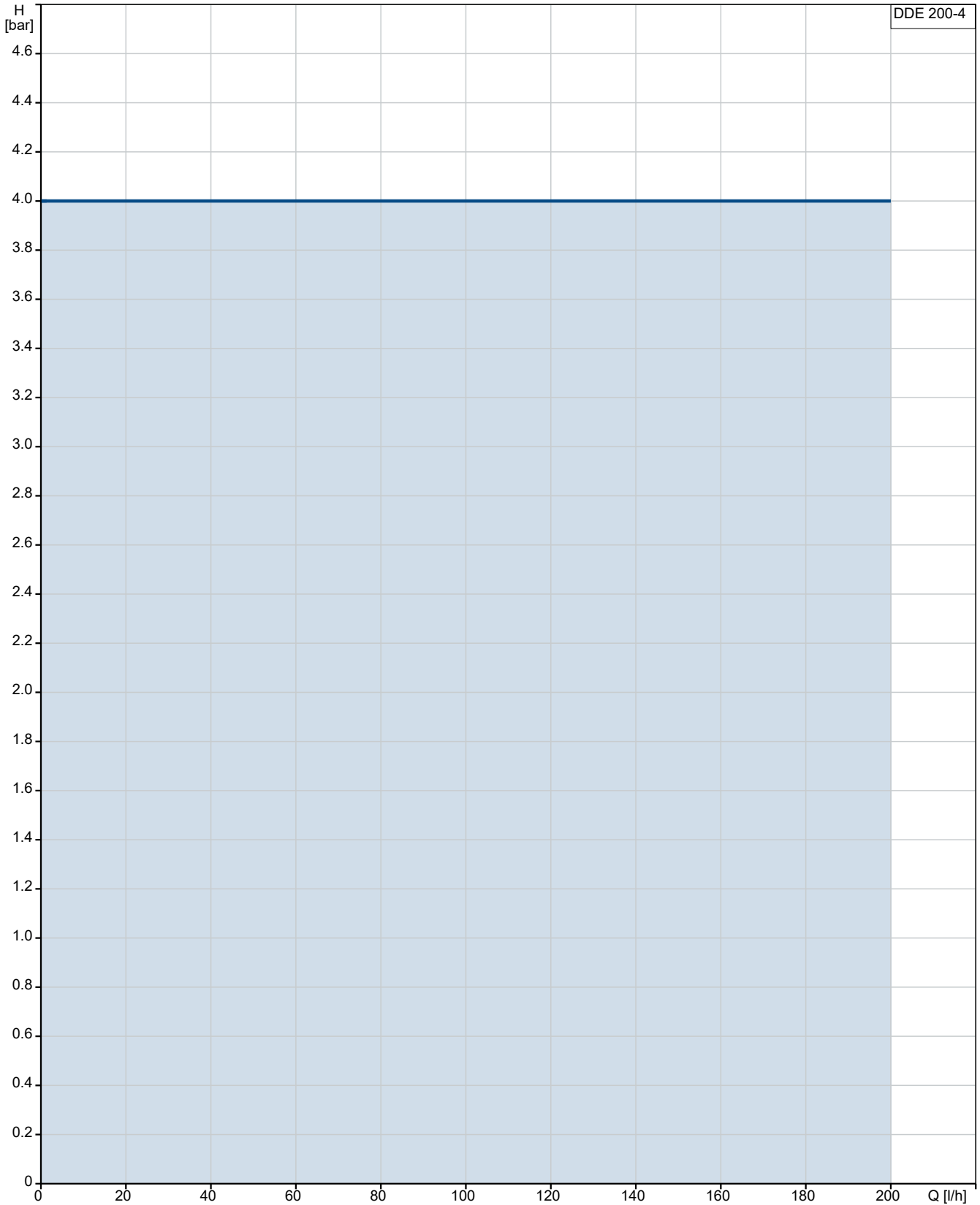
Created by:

Phone:

Date:

20/10/2024

On request DDE 200-4

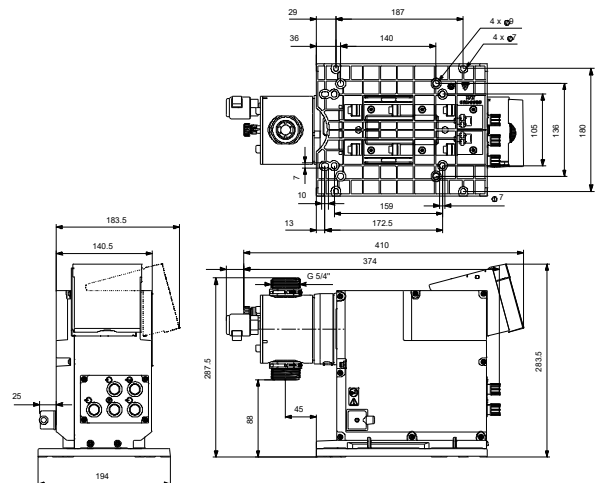
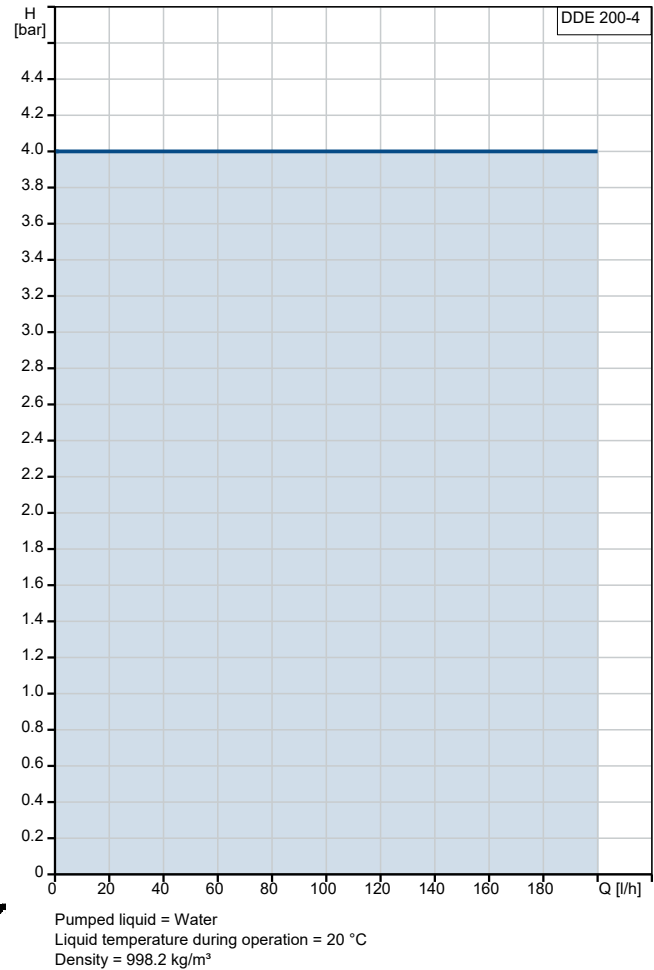


Pumped liquid = Water

Liquid temperature during operation = 20 °C

Density = 998.2 kg/m³

Description	Value
General information:	
Product name:	DDE 200-4
Product No:	On request
EAN number:	On request
Technical:	
Type key:	DDE 200-4 AR-PVC/T/C-F-31U3U3F
Max. Flow:	200 l/h
Min flow:	250 ml/h
Turn-down ratio:	1:800
Approvals:	CE, CSA-US, NSF61, EAC, RCM
Valve type:	Standard
Maximum viscosity at 100 %:	100 mPas
Maximum viscosity in slow mode 50 %:	N/A mPas
Maximum viscosity in slow mode 25 %:	N/A mPas
Accuracy of repeatability:	5 %
Materials:	
Dosing head:	PVC (Polyvinyl chloride)
Valve ball:	Ceramic
Gasket:	PTFE
Installation:	
Range of ambient temperature:	0 .. 45 °C
Maximum operating pressure:	4 bar
Installation set:	NO
Installation type:	No installation set
Pump inlet:	Conn.pack U3 (hose ID.19mm &..
Pump outlet:	Conn.pack U3 (hose ID.19mm &..
Max. Suction lift during operation:	3 m
Max. Suction lift during priming:	1.5 m
Liquid:	
Pumped liquid:	Water
Liquid temperature range:	0 .. 40 °C
Selected liquid temperature:	20 °C
Density:	998.2 kg/m ³
Electrical data:	
Maximum power input - P1:	62 W
Mains frequency:	50 / 60 Hz
Rated voltage:	1 x 100-240 V
Enclosure class (IEC 34-5):	IP65 / TYPE 4X
Length of cable:	1.5 m
Type of cable plug:	EU
Inrush current:	70A at 240V (35A/100V) for 2ms
Controls:	
Control variant:	AR
Control panel:	Front-Mounted
Level control:	YES
Analog input:	0/4-20 MA
Pulse control:	YES
Ext. Stop input:	Yes
Output relays:	Yes
Others:	
Net weight:	7 kg
Gross weight:	7 kg





Company name:

Created by:

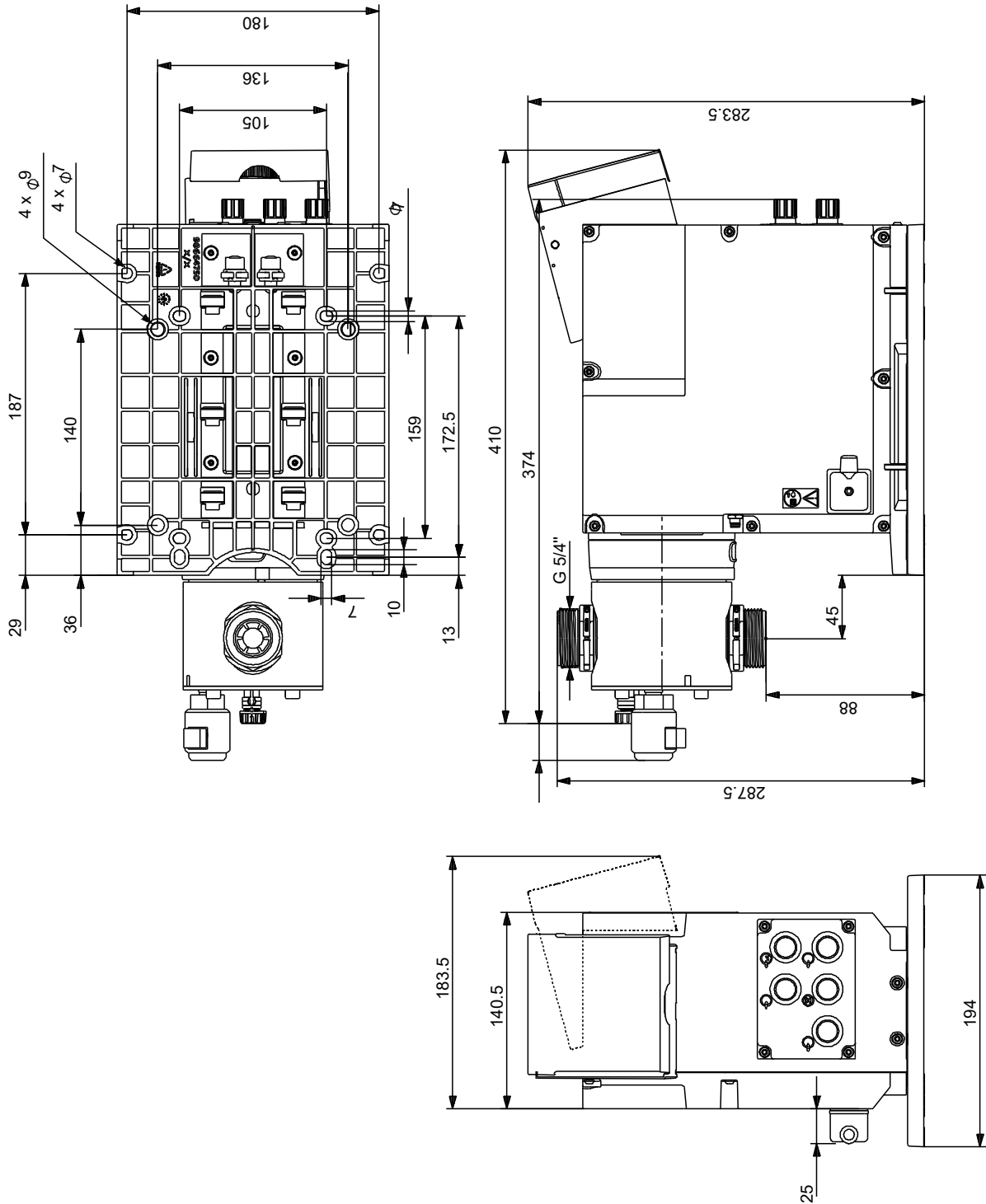
Phone:

Date:

20/10/2024

Description	Value
Color:	RED
Country of origin:	FR
Custom tariff no.:	84135040

On request DDE 200-4



Note! All units are in [mm] unless others are stated.
 Disclaimer: This simplified dimensional drawing does not show all details.

